

NOTICE!!

These documents have been scanned!

Do not place un-scanned documents beneath this notice!

Do not remove this notice from this file!

GPO Jacket No. 560-102
Print Order 61540
Rise Business Services, LLC
Job=AZ15 5/10/2019



Box Number= AZ15032



Claim Begin-End: AMC429005-AMC429006

1 Initial Receipt



AZ15032-5

AMC428906-AMC429539

170000
170000

**NO WARRANTY IS MADE BY BLM
FOR USE OF THE DATA FOR
PURPOSES NOT INTENDED BY BLM**

United States Department of the Interior
Bureau of Land Management
 LANDS/RECREATION & PLANNING
 ONE N CENTRAL AVE
 PHOENIX, AZ 85004 -2203
 Phone: 602-417-9200

Receipt



No: 3116270

Transaction #: 3208015
Date of Transaction: 08/28/2014
CUSTOMER:
BRONCO CREEK EXPLORATION INC. 1815 E WINSETT ST TUCSON,AZ 85719-6547 US

LINE #	QTY	DESCRIPTION	REMARKS	UNIT PRICE	TOTAL
1	2.00	LOCATABLE MINERALS / MINING CLAIMS-NEW,UNADJUD, ONE OR MORE AUTH NOS / NEW MINING CLAIM LOCATION FEE \$34 CASES: AMC429005/\$34.00, AMC429006/\$34.00		- n/a -	68.00
2	2.00	LOCATABLE MINERALS / MINING CLAIMS-NEW,UNADJUD, ONE OR MORE AUTH NOS / NEW MINING CLAIM MAINT FEE \$140 CASES: AMC429005/\$140.00, AMC429006/\$140.00		- n/a -	280.00
3	2.00	LOCATABLE MINERALS / MINING CLAIMS-NEW,UNADJUD, ONE OR MORE AUTH NOS / NEW MINING CLAIM PROCESSING FEE CASES: AMC429005/\$20.00, AMC429006/\$20.00		- n/a -	40.00
4	1.00	LOCATABLE MINERALS / MINING CLAIMS-NOT NEW-UNADJUD,ONE AUTH NO. ONLY / MINING CLAIM MONEY RECEIVED CASES: AMC388772/\$39215.00	MAINT (253) 2015	- n/a -	39215.00
TOTAL:					\$39,603.00

PAYMENT INFORMATION			
1	AMOUNT:	39603.00	POSTMARKED: N/A
	TYPE:	CHECK	RECEIVED: 08/28/2014
	CHECK NO:	2335	
	NAME:	BRONCO CREEK EXPLORATION INC. 1815 E WINSETT ST TUCSON AZ 85719-6547 US	

REMARKS

This receipt was generated by the automated BLM Collections and Billing System and is a paper representation of a portion of the official electronic record contained therein.

NOTICE!!

These documents have been scanned!

Do not place un-scanned documents beneath this notice!

Do not remove this notice from this file!

GPO Jacket No. 560-102
Print Order 61540
Rise Business Services, LLC
Job=AZ15 5/10/2019



Box Number= AZ15032



Claim Begin-End: AMC429005-AMC429006

2 Correspondence



AZ15032-5

AMC428906-AMC429539



United States Department of the Interior



BUREAU OF LAND MANAGEMENT
Arizona State Office
One North Central Avenue, Suite 800
Phoenix, Arizona 85004-4427
www.blm.gov/az/

NOV 23 2015

In Reply Refer To:

3800 (9200) PB
AMC388772, AMC391101, AMC400517,
AMC407981, AMC410781, AMC411139,
AMC412453, AMC416697, AMC417328,
AMC424296, AMC426840, AMC427738,
AMC429005

CERTIFIED MAIL - RETURN RECEIPT REQUESTED No. 7015 1730 0000 4049 3710

DECISION

BRONCO CREEK EXPLORATION INC : This decision affects those claims shown
1815 E WINSETT ST : on the attached list(s).
TUCSON, AZ 85719-6547 :

SEE ATTACHED LIST OF CLAIMS

MINING CLAIMS DECLARED FORFEIT

The mining claims listed above have been declared forfeit as of September 1, 2015, for failure to timely file the required maintenance fee payment or small miner's maintenance fee waiver (waiver).

Claimants are required to pay an annual non-refundable maintenance fee of \$155 per 20 acres or portion thereof, or submit a waiver, on or before September 1 of each year. These requirements were established by 30 U.S.C. 28f-1, as amended, and 43 CFR 3834 and 3835.

Our records do not show receipt of a maintenance fee payment or small miner waiver filed on or before the due date. Therefore, the claims listed above are forfeit.

Reclamation Requirements

This decision does not relieve you of the liability for reclamation of all areas disturbed by your activities on lands covered by the subject mining claim(s) and/or site(s). After you complete the reclamation, you must notify the authorized officer of the appropriate surface managing agency so that the authorized officer may conduct a final site inspection and determine whether you may be released from liability. If you fail to reclaim the land to the satisfaction of the authorized officer, the surface management agency may cite you for noncompliance under its surface management regulations. For land administered by the Bureau of Land Management (BLM), if you fail to

reclaim the land to the satisfaction of the authorized officer as required in 43 CFR Subpart 3809, BLM will issue an order of noncompliance under 43 CFR 3809.601(a). If you fail to comply with the non-compliance order, BLM may take further action under 43 CFR 3809.604. Failure to conduct reclamation is a prohibited act that may subject you to criminal penalties. See 43 CFR 3809.605(h) and 43 CFR 3809.700.

Appeal Procedures

This decision may be appealed to the Interior Board of Land Appeals, Office of the Secretary, in accordance with the regulations contained in 43 CFR, Part 4, and the enclosed Form 1842-1. If an appeal is taken, your notice of appeal must be filed in this office (at the above address) within 30 days from receipt of this decision. The appellant has the burden of showing that the decision appealed from is in error.

If you wish to file a petition pursuant to regulation 43 CFR 4.21 (58 FR 4939, January 19, 1993) for a stay of the effectiveness of this decision during the time that your appeal is being reviewed by the Board, the petition for a stay must accompany your notice of appeal. A petition for a stay is required to show sufficient justification based on the standards listed below. Copies of the notice of appeal and petition for a stay **must** also be submitted to each party named in this decision and to the Interior Board of Land Appeals and to the appropriate Office of the Solicitor (see 43 CFR 4.413) at the same time the original documents are filed with this office. If you request a stay, you have the burden of proof to demonstrate that a stay should be granted.

Standards for Obtaining a Stay

Except as otherwise provided by law or other pertinent regulation, a petition for a stay of a decision pending appeal shall show sufficient justification based on the following standards:

- (1) The relative harm to the parties if the stay is granted or denied,
- (2) The likelihood of the appellant's success on the merits,
- (3) The likelihood of immediate and irreparable harm if the stay is not granted, and
- (4) Whether the public interest favors granting the stay.

Please include your AMC serial number(s) on all correspondence. If additional information is required, please call Pauline Brown at 602-417-9360.

Sincerely,



Rebecca Heick
Deputy State Director
Lands, Minerals and Energy Division

Enclosure(s)

SENDER: COMPLETE THIS SECTION

- Complete items 1, 2, and 3. Also complete item 4 if Restricted Delivery is desired.
- Print your name and address on the reverse so that we can return the card to you.
- Attach this card to the back of the mailpiece, or on the front if space permits.

1. Article Addressed to:

BRONCO CREEK EXPLORATION INC
1815 E WINSETT ST
TUCSON, AZ 85719-6547
920/PB/AMC388772/391101/400517/
407981/410781/411139/412453/
416697/417328424296/426840/427738

COMPLETE THIS SECTION ON DELIVERY

A. Signature Agent
[Signature] Addressee

B. Received by (Printed Name) *Andrew Fowler* C. Date of Delivery *11-30-15*

D. Is delivery address different from item 1? Yes
If YES, enter delivery address below: No

2015 DEC -2 P 3:00

PHOENIX, ARIZONA

3. Service Type
 Certified Mail® Priority Mail Express™
 Registered Return Receipt for Merchandise
 Insured Mail Collect on Delivery

4. Restricted Delivery? (Extra Fee) Yes

2. Article Number
(Transfer from service label)

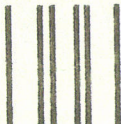
7015 1730 0000 4049 3710

PS Form 3811, July 2013

Domestic Return Receipt

UNITED STATES POSTAL SERVICE

30 NOV '15



First-Class Mail
Postage & Fees Paid
USPS
Permit No. G-10

• Sender: Please print your name, address, and ZIP+4® in this box•

UNITED STATES
DEPARTMENT OF THE INTERIOR
Bureau of Land Management
Arizona State Office
One N. Central Avenue, Suite 800
Phoenix, AZ 85004-4427



NOTICE!!

These documents have been scanned!

Do not place un-scanned documents beneath this notice!

Do not remove this notice from this file!

GPO Jacket No. 560-102
Print Order 61540
Rise Business Services, LLC
Job=AZ15 5/10/2019



Box Number= AZ15032



Claim Begin-End: AMC429005-AMC429006

3 Transfers



AZ15032-5

AMC428906-AMC429539

NO
DOCUMENTS
FOUND

NO DOCUMENTS FOUND
NO DOCUMENTS FOUND

NOTICE!!

These documents have been scanned!

Do not place un-scanned documents beneath this notice!

Do not remove this notice from this file!

GPO Jacket No. 560-102
Print Order 61540
Rise Business Services, LLC
Job=AZ15 5/10/2019



Box Number= AZ15032



Claim Begin-End: AMC429005-AMC429006

4 Annual Filings



AZ15032-5

AMC428906-AMC429539



Bronco Creek Exploration Inc.
1815 East Winsett Street
Tucson, Arizona 85719-6547

Tel. (520) 624-4153
Fax: (520) 624-4192
www.broncocreek.com

RECEIVED
BLM AZ STATE OFFICE

2016 AUG 25 P 1:30

August 23, 2016

After recording, return to:
Bronco Creek Exploration, Inc.
Attention: Chelsea Kreiner
1815 East Winsett Street
Tucson, AZ 85719-6547

PHOENIX, ARIZONA

388772

389883

399816

401281

417327

426597

429005

Bureau of Land Management
One North Central Avenue, Suite 800
Phoenix, AZ 85004-4427
(602) 417-9200

Attn: Mining Claims

Please accept the following 2016-2017 maintenance fee payment documentation enclosed on behalf of the claimant, Bronco Creek Exploration, Inc., of 1815 East Winsett Street, Tucson, Arizona 85719:

- Maintenance Fee Payment document form 3830-5
- Exhibit A- List of mining claims and AMC numbers
- Check # 3204 for the amount of \$33,480 to cover the 2016-2017 maintenance fees required of \$155.00 per claim for the 216 unpatented mining claims located in Gila County, Arizona.

If there are any questions or problems, please contact me at (520) 624-4153, ckreiner@broncocreek.com or at the address above. Thank you very much for your assistance.

Sincerely,

Chelsea Kreiner
Land & Permitting Manager

RECEIPT # 3642545

UNITED STATES
DEPARTMENT OF THE INTERIOR
BUREAU OF LAND MANAGEMENT
**MAINTENANCE FEE PAYMENT FORM FOR
LODE CLAIMS, MILL SITES, AND TUNNEL SITES**

Remitter Name: Bronco Creek Exploration, Inc.
 Mailing Address: 1815 E. Winsett St.
 City, State, Zip: Tucson, AZ 85719

Check here if this is a change of address.

FOR COUNTY RECORDER'S USE

No. of claims/sites 216
 x \$155 per claim/site
 Total due BLM \$ 33480

- The maintenance fee may be paid by cash, check, money order, Bureau of Land Management (BLM) Declining Deposit Account, or credit card (VISA, American Express, Discover, or MasterCard). Payments must be remitted to the BLM State Office where your claim or site is recorded and received on or before September 1. If the payment is mailed, the envelope must be postmarked by a bona fide delivery service on or before September 1 and received at the proper BLM State Office within 15 calendar days after the due date. Payments may also be made by telephone using a credit card. A complete listing of BLM State Offices with their addresses and phone numbers can be found at <http://www.blm.gov>.
- The maintenance fee for the following claim(s)/site(s) applies to the assessment year 16-17.

CLAIM/SITE NAME	BLM SERIAL NO.
Please see attached list.	

RECEIVED
 BLM AZ STATE OFFICE
 2016 AUG 25 P 1:30
 PHOENIX, ARIZONA

Use a separate sheet for additional claim/site names, serial numbers, and claimant names and addresses.

Bronco Creek Exploration, Inc.
August 19, 2016

Exhibit A

PHOENIX, ARIZONA

Gila County
Arizona

Project: Copper Springs

Line No.	BLM Serial No	Claim Name	County Recorder Data			Twn	Rng	Sec
			Fee #/ Doc ID#	Book	Page			
1	AMC388780	CS-30	2007-017015			1S	15E	7
2	AMC388781	CS-31	2007-017016			1S	15E	7
3	AMC388782	CS-32	2007-017017			1S	15E	7
4	AMC388783	CS-33	2007-017018			1S	15E	7
5	AMC388784	CS-34	2007-017019			1S	15E	7
6	AMC388785	CS-35	2007-017020			1S	15E	7
7	AMC388790	CS-46	2007-017025			1S	15E	6
8	AMC388791	CS-47	2007-017026			1S	15E	6, 7
9	AMC388792	CS-48	2007-017027			1S	15E	7
10	AMC388793	CS-49	2007-017028			1S	15E	7
11	AMC388794	CS-50	2007-017029			1S	15E	7
12	AMC388795	CS-51	2007-017030			1S	15E	7
13	AMC388796	CS-52	2007-017031			1S	15E	7
14	AMC388797	CS-53	2007-017032			1S	15E	7
15	AMC388798	CS-54	2007-017033			1S	15E	7
16	AMC388799	CS-55	2007-017034			1S	15E	7
17	AMC388800	CS-61	2007-017035			1S	15E	5, 6
18	AMC388801	CS-62	2007-017036			1S	15E	5, 6
19	AMC388802	CS-63	2007-017037			1S	15E	5, 6
20	AMC388803	CS-64	2007-017038			1S	15E	5, 6
21	AMC388804	CS-65	2007-017039			1S	15E	5, 6
22	AMC388805	CS-66	2007-017040			1S	15E	5, 6
23	AMC388806	CS-67	2007-017041			1S	15E	5, 6
24	AMC388807	CS-68	2007-017042			1S	15E	5, 6, 7, 8
25	AMC388808	CS-69	2007-017043			1S	15E	7, 8
26	AMC388809	CS-70	2007-017044			1S	15E	7, 8
27	AMC388810	CS-71	2007-017045			1S	15E	7, 8
28	AMC388811	CS-72	2007-017046			1S	15E	7, 8
29	AMC388812	CS-73	2007-017047			1S	15E	7, 8
30	AMC388813	CS-74	2007-017048			1S	15E	7, 8
31	AMC388814	CS-75	2007-017049			1S	15E	7, 8
32	AMC388815	CS-76	2007-017050			1S	15E	7, 8
33	AMC388820	CS-81	2007-017055			1S	15E	7, 8, 17, 18
34	AMC388821	CS-82	2007-017056			1S	15E	5
35	AMC388822	CS-83	2007-017057			1S	15E	5
36	AMC388823	CS-84	2007-017058			1S	15E	5
37	AMC388824	CS-85	2007-017059			1S	15E	5
38	AMC388825	CS-86	2007-017060			1S	15E	5

2016 AUG 25 P 1:30

Bronco Creek Exploration, Inc.
August 19, 2016**Exhibit A PHOENIX, ARIZONA**Gila County
Arizona**Project: Copper Springs**

39	AMC388826	CS-87	2007-017061	1S	15E	5
40	AMC388827	CS-88	2007-017062	1S	15E	8
41	AMC388828	CS-89	2007-017063	1S	15E	8
42	AMC388829	CS-90	2007-017064	1S	15E	8
43	AMC388830	CS-91	2007-017065	1S	15E	8
44	AMC388831	CS-92	2007-017066	1S	15E	8
45	AMC388832	CS-93	2007-017067	1S	15E	8
46	AMC388833	CS-94	2007-017069	1S	15E	8
47	AMC388834	CS-95	2007-017070	1S	15E	8
48	AMC388835	CS-96	2007-017071	1S	15E	8, 17
49	AMC388841	CS-102	2007-017077	1S	15E	5
50	AMC388842	CS-103	2007-017078	1S	15E	5
51	AMC388843	CS-104	2007-017079	1S	15E	5
52	AMC388844	CS-105	2007-017080	1S	15E	5
53	AMC388845	CS-106	2007-017081	1S	15E	5
54	AMC388846	CS-107	2007-017082	1S	15E	5, 8
55	AMC388847	CS-108	2007-017083	1S	15E	8
56	AMC388848	CS-109	2007-017084	1S	15E	8
57	AMC388849	CS-110	2007-017085	1S	15E	8
58	AMC388850	CS-111	2007-017086	1S	15E	8
59	AMC388851	CS-112	2007-017087	1S	15E	8
60	AMC388852	CS-113	2007-017088	1S	15E	8
61	AMC388853	CS-114	2007-017089	1S	15E	8
62	AMC388854	CS-115	2007-017090	1S	15E	8
63	AMC388855	CS-116	2007-017091	1S	15E	8, 17
64	AMC417327	CS-121A	2012-008627	1S	15E	4, 5
65	AMC388859	CS-122	2007-017095	1S	15E	4, 5
66	AMC388860	CS-123	2007-017096	1S	15E	4, 5
67	AMC388861	CS-124	2007-017097	1S	15E	4, 5
68	AMC388862	CS-125	2007-017098	1S	15E	4, 5
69	AMC388863	CS-126	2007-017099	1S	15E	4, 5
70	AMC388864	CS-127	2007-017100	1S	15E	4, 5, 8, 9
71	AMC388865	CS-128	2007-017101	1S	15E	8, 9
72	AMC388866	CS-129	2007-017102	1S	15E	8, 9
73	AMC388867	CS-130	2007-017103	1S	15E	8, 9
74	AMC388868	CS-131	2007-017068	1S	15E	8, 9
75	AMC388869	CS-132	2007-017104	1S	15E	8, 9
76	AMC388870	CS-133	2007-017105	1S	15E	8, 9
77	AMC388871	CS-134	2007-017106	1S	15E	8, 9
78	AMC388872	CS-135	2007-017107	1S	15E	8, 9

2016 AUG 25 P 1:31

Bronco Creek Exploration, Inc.
August 19, 2016

Exhibit A PHOENIX, ARIZONA

Gila County
Arizona

Project: Copper Springs

79	AMC388873	CS-136	2007-017108	1S	15E	8, 9, 16, 17
80	AMC388876	CS-141	2007-017111	1S	15E	4
81	AMC388877	CS-142	2007-017112	1S	15E	4
82	AMC388878	CS-143	2007-017113	1S	15E	4
83	AMC388879	CS-144	2007-017114	1S	15E	4
84	AMC388880	CS-145	2007-017115	1S	15E	4
85	AMC388881	CS-146	2007-017116	1S	15E	4
86	AMC388882	CS-147	2007-017117	1S	15E	4, 9
87	AMC388883	CS-148	2007-017118	1S	15E	9
88	AMC388884	CS-149	2007-017119	1S	15E	9
89	AMC388885	CS-150	2007-017120	1S	15E	9
90	AMC388886	CS-151	2007-017121	1S	15E	9
91	AMC388887	CS-152	2007-017122	1S	15E	9
92	AMC388888	CS-153	2007-017123	1S	15E	9
93	AMC429005	CS-154A	2014-008656	1S	15E	9
94	AMC388890	CS-159	2007-017125	1S	15E	4
95	AMC388891	CS-160	2007-017126	1S	15E	4
96	AMC388892	CS-161	2007-017127	1S	15E	4
97	AMC388893	CS-162	2007-017128	1S	15E	4
98	AMC388894	CS-163	2007-017129	1S	15E	4
99	AMC388895	CS-164	2007-017130	1S	15E	4
100	AMC388896	CS-165	2007-017131	1S	15E	4, 9
101	AMC388897	CS-166	2007-017132	1S	15E	9
102	AMC388898	CS-167	2007-017133	1S	15E	9
103	AMC388899	CS-168	2007-017134	1S	15E	9
104	AMC388900	CS-169	2007-017135	1S	15E	9
105	AMC388901	CS-170	2007-017136	1S	15E	9
106	AMC388902	CS-171	2007-017137	1S	15E	9
107	AMC388904	CS-175	2007-017139	1S	15E	4
108	AMC388905	CS-176	2007-017140	1S	15E	4
109	AMC388906	CS-177	2007-017141	1S	15E	4
110	AMC388907	CS-178	2007-017142	1S	15E	4
111	AMC388908	CS-179	2007-017143	1S	15E	4
112	AMC388909	CS-180	2007-017144	1S	15E	4
113	AMC388910	CS-181	2007-017145	1S	15E	4, 9
114	AMC388911	CS-182	2007-017146	1S	15E	9
115	AMC388912	CS-183	2007-017147	1S	15E	9
116	AMC388920	CS-191	2007-017155	1S	15E	3, 4
117	AMC388921	CS-192	2007-017156	1S	15E	3, 4
118	AMC388922	CS-193	2007-017157	1S	15E	3, 4

Bronco Creek Exploration, Inc.
August 19, 2016

Exhibit A

PHOENIX, ARIZONA

Gila County
Arizona

Project: Copper Springs

119	AMC388923	CS-194	2007-017158	1S	15E	3, 4
120	AMC388924	CS-195	2007-017159	1S	15E	3, 4
121	AMC388925	CS-196	2007-017160	1S	15E	3, 4
122	AMC388926	CS-197	2007-017161	1S	15E	3, 4, 9, 10
123	AMC388927	CS-198	2007-017162	1S	15E	9, 10
124	AMC388928	CS-199	2007-017163	1S	15E	9, 10
125	AMC388929	CS-200	2007-017164	1S	15E	9, 10
126	AMC388934	CS-205	2007-017169	1S	15E	3
127	AMC388935	CS-206	2007-017170	1S	15E	3
128	AMC388936	CS-207	2007-017171	1S	15E	3
129	AMC388937	CS-208	2007-017172	1S	15E	3
130	AMC388938	CS-209	2007-017173	1S	15E	3
131	AMC388939	CS-210	2007-017174	1S	15E	3
132	AMC388940	CS-211	2007-017175	1S	15E	3, 10
133	AMC388941	CS-212	2007-017176	1S	15E	10
134	AMC388942	CS-213	2007-017177	1S	15E	10
135	AMC388943	CS-214	2007-017178	1S	15E	10
136	AMC388945	CS-216	2007-017180	1S	15E	3
137	AMC388946	CS-217	2007-017181	1S	15E	3
138	AMC388947	CS-218	2007-017182	1S	15E	3
139	AMC388948	CS-219	2007-017183	1S	15E	3
140	AMC388949	CS-220	2007-017184	1S	15E	3
141	AMC388950	CS-221	2007-017185	1S	15E	3
142	AMC388951	CS-222	2007-017186	1S	15E	3, 10
143	AMC388952	CS-223	2007-017187	1S	15E	10
144	AMC388953	CS-224	2007-017188	1S	15E	3
145	AMC388954	CS-225	2007-017189	1S	15E	3
146	AMC388955	CS-226	2007-017190	1S	15E	3
147	AMC388956	CS-227	2007-017191	1S	15E	3
148	AMC388957	CS-228	2007-017192	1S	15E	3
149	AMC388958	CS-229	2007-017193	1S	15E	3
150	AMC388959	CS-230	2007-017194	1S	15E	2, 3
151	AMC388960	CS-231	2007-017195	1S	15E	2, 3
152	AMC388961	CS-232	2007-017196	1S	15E	2, 3
153	AMC388962	CS-233	2007-017197	1S	15E	2, 3
154	AMC426597	CS-234	2014-000969	1S	15E	4
155	AMC426598	CS-235	2014-000970	1S	15E	4
156	AMC426599	CS-236	2014-000971	1S	15E	4, 5
157	AMC426600	CS-237	2014-000972	1S	15E	5
158	AMC389883	CSN 1	2008-001699	1N; 1S	15E	35; 3

2016 AUG 25 P 1:31

Bronco Creek Exploration, Inc.
August 19, 2016**Exhibit A PHOENIX, ARIZONA**Gila County
Arizona**Project: Copper Springs**

159	AMC389884	CSN 2	2008-001700	1N; 1S	15E	35; 3
160	AMC389885	CSN 3	2008-001701	1N; 1S	15E	35; 3
161	AMC389886	CSN 4	2008-001702	1N; 1S	15E	35; 3
162	AMC389887	CSN 5	2008-001703	1N; 1S	15E	35; 3
163	AMC389888	CSN 6	2008-001704	1N; 1S	15E	35; 3
164	AMC389889	CSN 7	2008-001705	1N; 1S	15E	35; 3
165	AMC389890	CSN 8	2008-001706	1N; 1S	15E	35; 3
166	AMC389891	CSN 9	2008-001707	1N	15E	35
167	AMC389892	CSN 10	2008-001708	1N	15E	35
168	AMC389893	CSN 11	2008-001709	1N	15E	35
169	AMC389894	CSN 12	2008-001710	1N	15E	35
170	AMC389895	CSN 13	2008-001711	1N	15E	35
171	AMC389896	CSN 14	2008-001712	1N	15E	35
172	AMC389897	CSN 15	2008-001713; 2010-010709	1N	15E	35
173	AMC389898	CSN 16	2008-001714; 2010-010710	1N	15E	35
174	AMC389899	CSN 17	2008-001715	1N	15E	35
175	AMC389900	CSN 18	2008-001716	1N	15E	35
176	AMC389901	CSN 19	2008-001717	1N	15E	35
177	AMC389902	CSN 20	2008-001718	1N	15E	35
178	AMC389903	CSN 21	2008-001719; 2010-010711	1N	15E	35
179	AMC389904	CSN 22	2008-001720; 2010-010712	1N	15E	35
180	AMC389905	CSN 23	2008-001721; 2010-010713	1N	15E	35
181	AMC389906	CSN 24	2008-001722	1N	15E	35
182	AMC389907	CSN 25	2008-001723; 2010-010714	1N	15E	35
183	AMC401281	CSN-26	2010-006515	1N	15E	26, 35
184	AMC401282	CSN-27	2010-006516	1N	15E	26, 35
185	AMC401283	CSN-28	2010-006517	1N	15E	26, 35
186	AMC401284	CSN-29	2010-006518	1N	15E	26, 35
187	AMC401285	CSN-30	2010-006519	1N	15E	26, 35
188	AMC401286	CSN-31	2010-006697	1N	15E	26
189	AMC401287	CSN-32	2010-006698	1N	15E	26
190	AMC401288	CSN-33	2010-006520	1N	15E	35
191	AMC401289	CSN-34	2010-006521	1N; 1S	15E	35; 3
192	AMC399816	CSNW 1	2010-002695	1N	15E	34

Bronco Creek Exploration, Inc.
August 19, 2016

Exhibit A

Gila County
Arizona

Project: Copper Springs

Line No.	AMC No.	CSNW No.	Project No.	Section	Section	Section
193	AMC399817	CSNW 2	2010-002696	1N	15E	34
194	AMC399818	CSNW 3	2010-002697	1N	15E	34, 35
195	AMC399819	CSNW 4	2010-002698	1N	15E	34
196	AMC399820	CSNW 5	2010-002699	1N	15E	34
197	AMC399821	CSNW 6	2010-002700	1N	15E	34, 35
198	AMC399822	CSNW 7	2010-002701	1N	15E	34
199	AMC399823	CSNW 8	2010-002702	1N	15E	34
200	AMC399824	CSNW 9	2010-002703	1N	15E	34
201	AMC399825	CSNW 10	2010-002704	1N	15E	34
202	AMC399826	CSNW 11	2010-002705	1N	15E	34, 35
203	AMC399827	CSNW 12	2010-002706	1N	15E	34
204	AMC399828	CSNW 13	2010-002707	1N	15E	34, 35
205	AMC399829	CSNW 14	2010-002708	1N	15E	34
206	AMC399830	CSNW 15	2010-002709	1N	15E	34, 35
207	AMC399831	CSNW 16	2010-002710	1N	15E	34
208	AMC399832	CSNW 17	2010-002711	1N	15E	34
209	AMC399833	CSNW 18	2010-002712	1N	15E	34
210	AMC399834	CSNW 19	2010-002713	1N	15E	34, 35
211	AMC399835	CSNW 20	2010-002714	1N	15E	34, 35
212	AMC399836	CSNW 21	2010-002715	1N; 1S	15E	34, 35
213	AMC399837	CSNW 22	2010-002716	1N; 1S	15E	34, 35
214	AMC399838	CSNW 23	2010-002717	1N	15E	34, 35
215	AMC399839	CSNW 24	2010-002718	1N	15E	34, 35
216	AMC399840	CSNW 25	2010-002719	1N	15E	34, 35

RECEIVED
STATE OFFICE
2016 AUG 25 P 1:31
PHOENIX ARIZONA

Insert shipping document here

ORIGIN ID:TUSA (520) 624-4153
ANDREW FAULKNER
BRONCO CREATION EXPLORATION INC.
1815 E. WINSETT ST.

SHIP DATE: 24AUG16
ACTWGT: 0.50 LB
CAD: 100315405/NET3790

TUCSON, AZ 85719
UNITED STATES US

BILL SENDER

TO BUREAU OF LAND MANAGEMENT
ARIZONA STATE OFFICE
1 N CENTRAL AVE
STE 800
PHOENIX AZ 85004

(602) 417-9200
INV: PO:

REF:

DEPT:

<https://www.fedex.com/shipping/html/en/PrintFrame.html>

Extremely Urgent

54-111370KHEB

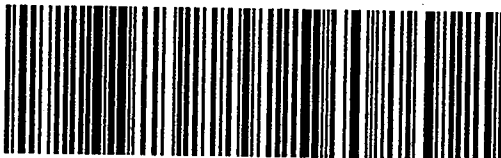


THU - 25 AUG 10:30A
PRIORITY OVERNIGHT

TRK# 7770 6203 7186
0201

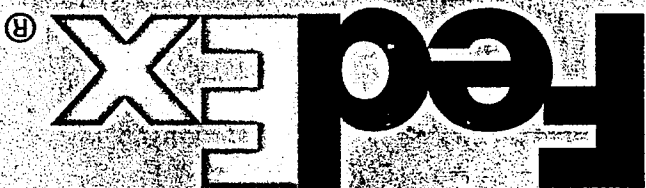
XH ZSYA

85004
AZ-US PHX



RT 278 1 10:30 D
ST 4.2 7186 08.25

Express



FedEx

Express



earth smart

FedEx carbon-neutral
envelope shipping

Align top of FedEx Express® shipping label here.

RECEIVED
BLM AZ STATE OFFICE
2011 AUG 25 P 11:25
PHOENIX, ARIZONA

Envelope

United States Department of the Interior
Bureau of Land Management
 DIV OF LANDS, MINRLS & ENERGY
 ONE N CENTRAL AVE
 PHOENIX, AZ 85004 -4427
 Phone: 602-417-9200

Receipt

No: 3642545

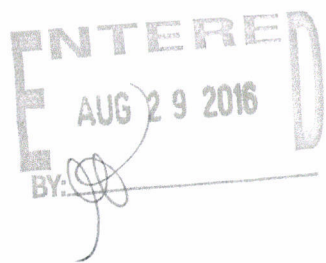
Transaction #: 3746504	
Date of Transaction: 08/26/2016	
CUSTOMER:	
BRONCO CREEK EXPLORATION INC. 1815 E WINSETT ST TUCSON, AZ 85719-6547 US	

LINE #	QTY	DESCRIPTION	REMARKS	UNIT PRICE	TOTAL
1	1.00	LOCATABLE MINERALS / MINING CLAIMS- NOT NEW-UNADJUD, ONE AUTH NO. ONLY / MINING CLAIM MONEY RECEIVED CASES: AMC388780/\$33480.00	MAINT FEE 2017 - 216	- n/a -	33480.00
TOTAL:					\$33,480.00

PAYMENT INFORMATION					
1	AMOUNT:	33480.00	POSTMARKED:	08/24/2016	
	TYPE:	CHECK	RECEIVED:	08/25/2016	
	CHECK NO:	3204			
	NAME:	BRONCO CREEK EXPLORATION 1815 E WINSETT ST TUCSON AZ 85719-6547 US			

REMARKS

This receipt was generated by the automated BLM Collections and Billing System and is a paper representation of a portion of the official electronic record contained therein.



 ENTERED
 AUG 29 2016
 BY: *[Signature]*

UNITED STATES
DEPARTMENT OF THE INTERIOR
BUREAU OF LAND MANAGEMENT
**MAINTENANCE FEE PAYMENT FORM FOR
LODE CLAIMS, MILL SITES, AND TUNNEL SITES**

AMC 388772
417327
429005
426597
389833
399816

Remitter Name: Bronco Creek Exploration, Inc.
Mailing Address: 1815 E. Winsett St.
City, State, Zip: Tucson, AZ 85719

Check here if this is a change of address.

FOR COUNTY RECORDER'S USE

No. of claims/sites 216
x \$155 per claim/site
Total due BLM \$ 33480

1. The maintenance fee may be paid by cash, check, money order, Bureau of Land Management (BLM) Declining Deposit Account, or credit card (VISA, American Express, Discover, or MasterCard). Payments must be remitted to the BLM State Office where your claim or site is recorded and received on or before September 1. If the payment is mailed, the envelope must be postmarked by a bona fide delivery service on or before September 1 and received at the proper BLM State Office within 15 calendar days after the due date. Payments may also be made by telephone using a credit card. A complete listing of BLM State Offices with their addresses and phone numbers can be found at <http://www.blm.gov>.
2. The maintenance fee for the following claim(s)/site(s) applies to the assessment year 15-16.

CLAIM/SITE NAME	BLM SERIAL NO.
Please see attached list.	

RECEIVED
BLM STATE OFFICE
TUCSON, ARIZONA
AUG 26 A 9:55

Use a separate sheet for additional claim/site names, serial numbers, and claimant names and addresses.

(Continued on page 2)

ENTERED
AUG 28 2015
BY: Rm

RECEIPT # 3378731

Exhibit A
Project: Copper Springs

Line No.	BLM Serial No	Claim Name	County Recorder Data			Twn	Rng	Sec
			Fee #/ Doc ID#	Book	Page			
1	AMC388780	CS-30	2007-017015			1S	15E	7
2	AMC388781	CS-31	2007-017016			1S	15E	7
3	AMC388782	CS-32	2007-017017			1S	15E	7
4	AMC388783	CS-33	2007-017018			1S	15E	7
5	AMC388784	CS-34	2007-017019			1S	15E	7
6	AMC388785	CS-35	2007-017020			1S	15E	7
7	AMC388790	CS-46	2007-017025			1S	15E	6
8	AMC388791	CS-47	2007-017026			1S	15E	6, 7
9	AMC388792	CS-48	2007-017027			1S	15E	7
10	AMC388793	CS-49	2007-017028			1S	15E	7
11	AMC388794	CS-50	2007-017029			1S	15E	7
12	AMC388795	CS-51	2007-017030			1S	15E	7
13	AMC388796	CS-52	2007-017031			1S	15E	7
14	AMC388797	CS-53	2007-017032			1S	15E	7
15	AMC388798	CS-54	2007-017033			1S	15E	7
16	AMC388799	CS-55	2007-017034			1S	15E	7
17	AMC388800	CS-61	2007-017035			1S	15E	5, 6
18	AMC388801	CS-62	2007-017036			1S	15E	5, 6
19	AMC388802	CS-63	2007-017037			1S	15E	5, 6
20	AMC388803	CS-64	2007-017038			1S	15E	5, 6
21	AMC388804	CS-65	2007-017039			1S	15E	5, 6
22	AMC388805	CS-66	2007-017040			1S	15E	5, 6
23	AMC388806	CS-67	2007-017041			1S	15E	5, 6, 7, 8
24	AMC388807	CS-68	2007-017042			1S	15E	7, 8
25	AMC388808	CS-69	2007-017043			1S	15E	7, 8
26	AMC388809	CS-70	2007-017044			1S	15E	7, 8
27	AMC388810	CS-71	2007-017045			1S	15E	7, 8
28	AMC388811	CS-72	2007-017046			1S	15E	7, 8
29	AMC388812	CS-73	2007-017047			1S	15E	7, 8
30	AMC388813	CS-74	2007-017048			1S	15E	7, 8
31	AMC388814	CS-75	2007-017049			1S	15E	7, 8
32	AMC388815	CS-76	2007-017050			1S	15E	7, 8, 17, 18
33	AMC388820	CS-81	2007-017055			1S	15E	
34	AMC388821	CS-82	2007-017056			1S	15E	
35	AMC388822	CS-83	2007-017057			1S	15E	
36	AMC388823	CS-84	2007-017058			1S	15E	
37	AMC388824	CS-85	2007-017059			1S	15E	
38	AMC388825	CS-86	2007-017060			1S	15E	
39	AMC388826	CS-87	2007-017061			1S	15E	
40	AMC388827	CS-88	2007-017062			1S	15E	

RECEIVED
 BLM AZ STATE OFFICE
 AUG 25 2015
 PHOENIX, ARIZONA

Bronco Creek Exploration, Inc.
August 25, 2015

Exhibit A

Gila County
Arizona

Project: Copper Springs

41	AMC388828	CS-89	2007-017063	1S	15E	8
42	AMC388829	CS-90	2007-017064	1S	15E	8
43	AMC388830	CS-91	2007-017065	1S	15E	8
44	AMC388831	CS-92	2007-017066	1S	15E	8
45	AMC388832	CS-93	2007-017067	1S	15E	8
46	AMC388833	CS-94	2007-017069	1S	15E	8
47	AMC388834	CS-95	2007-017070	1S	15E	8
48	AMC388835	CS-96	2007-017071	1S	15E	8, 17
49	AMC388841	CS-102	2007-017077	1S	15E	5
50	AMC388842	CS-103	2007-017078	1S	15E	5
51	AMC388843	CS-104	2007-017079	1S	15E	5
52	AMC388844	CS-105	2007-017080	1S	15E	5
53	AMC388845	CS-106	2007-017081	1S	15E	5
54	AMC388846	CS-107	2007-017082	1S	15E	5, 8
55	AMC388847	CS-108	2007-017083	1S	15E	8
56	AMC388848	CS-109	2007-017084	1S	15E	8
57	AMC388849	CS-110	2007-017085	1S	15E	8
58	AMC388850	CS-111	2007-017086	1S	15E	8
59	AMC388851	CS-112	2007-017087	1S	15E	8
60	AMC388852	CS-113	2007-017088	1S	15E	8
61	AMC388853	CS-114	2007-017089	1S	15E	8
62	AMC388854	CS-115	2007-017090	1S	15E	8
63	AMC388855	CS-116	2007-017091	1S	15E	8, 17
64	AMC417327	CS-121A	2012-008627	1S	15E	4, 5
65	AMC388859	CS-122	2007-017095	1S	15E	4, 5
66	AMC388860	CS-123	2007-017096	1S	15E	4, 5
67	AMC388861	CS-124	2007-017097	1S	15E	4, 5
68	AMC388862	CS-125	2007-017098	1S	15E	4, 5
69	AMC388863	CS-126	2007-017099	1S	15E	4, 5
70	AMC388864	CS-127	2007-017100	1S	15E	4, 5, 8, 9
71	AMC388865	CS-128	2007-017101	1S	15E	8, 9
72	AMC388866	CS-129	2007-017102	1S	15E	8, 9
73	AMC388867	CS-130	2007-017103	1S	15E	8, 9
74	AMC388868	CS-131	2007-017068	1S	15E	8, 9
75	AMC388869	CS-132	2007-017104	1S	15E	8, 9
76	AMC388870	CS-133	2007-017105	1S	15E	8, 9
77	AMC388871	CS-134	2007-017106	1S	15E	8, 9
78	AMC388872	CS-135	2007-017107	1S	15E	8, 9
79	AMC388873	CS-136	2007-017108	1S	15E	8, 9, 16, 17
80	AMC388876	CS-141	2007-017111	1S	15E	4
81	AMC388877	CS-142	2007-017112	1S	15E	4
82	AMC388878	CS-143	2007-017113	1S	15E	4

RECEIVED
 GILMAZ STATE OFFICE
 PHOENIX, ARIZONA
 8/25/15

Bronco Creek Exploration, Inc.
August 25, 2015

Exhibit A

Gila County
Arizona

Project: Copper Springs

83	AMC388879	CS-144	2007-017114	1S	15E	4
84	AMC388880	CS-145	2007-017115	1S	15E	4
85	AMC388881	CS-146	2007-017116	1S	15E	4
86	AMC388882	CS-147	2007-017117	1S	15E	4, 9
87	AMC388883	CS-148	2007-017118	1S	15E	9
88	AMC388884	CS-149	2007-017119	1S	15E	9
89	AMC388885	CS-150	2007-017120	1S	15E	9
90	AMC388886	CS-151	2007-017121	1S	15E	9
91	AMC388887	CS-152	2007-017122	1S	15E	9
92	AMC388888	CS-153	2007-017123	1S	15E	9
93	AMC429005	CS-154A	2014-008656	1S	15E	9
94	AMC388890	CS-159	2007-017125	1S	15E	4
95	AMC388891	CS-160	2007-017126	1S	15E	4
96	AMC388892	CS-161	2007-017127	1S	15E	4
97	AMC388893	CS-162	2007-017128	1S	15E	4
98	AMC388894	CS-163	2007-017129	1S	15E	4
99	AMC388895	CS-164	2007-017130	1S	15E	4
100	AMC388896	CS-165	2007-017131	1S	15E	4, 9
101	AMC388897	CS-166	2007-017132	1S	15E	9
102	AMC388898	CS-167	2007-017133	1S	15E	9
103	AMC388899	CS-168	2007-017134	1S	15E	9
104	AMC388900	CS-169	2007-017135	1S	15E	9
105	AMC388901	CS-170	2007-017136	1S	15E	9
106	AMC388902	CS-171	2007-017137	1S	15E	9
107	AMC388904	CS-175	2007-017139	1S	15E	4
108	AMC388905	CS-176	2007-017140	1S	15E	4
109	AMC388906	CS-177	2007-017141	1S	15E	4
110	AMC388907	CS-178	2007-017142	1S	15E	4
111	AMC388908	CS-179	2007-017143	1S	15E	4
112	AMC388909	CS-180	2007-017144	1S	15E	4
113	AMC388910	CS-181	2007-017145	1S	15E	4, 9
114	AMC388911	CS-182	2007-017146	1S	15E	9
115	AMC388912	CS-183	2007-017147	1S	15E	9
116	AMC388920	CS-191	2007-017155	1S	15E	4
117	AMC388921	CS-192	2007-017156	1S	15E	4
118	AMC388922	CS-193	2007-017157	1S	15E	4
119	AMC388923	CS-194	2007-017158	1S	15E	4
120	AMC388924	CS-195	2007-017159	1S	15E	4
121	AMC388925	CS-196	2007-017160	1S	15E	4
122	AMC388926	CS-197	2007-017161	1S	15E	3, 4, 9, 10
123	AMC388927	CS-198	2007-017162	1S	15E	10
124	AMC388928	CS-199	2007-017163	1S	15E	10

PHOENIX, ARIZONA

RECEIVED
BLM AZ STATE OFFICE
AUG 25 2015
3, 4, 9, 10

Bronco Creek Exploration, Inc.
August 25, 2015

Exhibit A

Gila County
Arizona

Project: Copper Springs

125	AMC388929	CS-200	2007-017164	1S	15E	9, 10
126	AMC388934	CS-205	2007-017169	1S	15E	3
127	AMC388935	CS-206	2007-017170	1S	15E	3
128	AMC388936	CS-207	2007-017171	1S	15E	3
129	AMC388937	CS-208	2007-017172	1S	15E	3
130	AMC388938	CS-209	2007-017173	1S	15E	3
131	AMC388939	CS-210	2007-017174	1S	15E	3
132	AMC388940	CS-211	2007-017175	1S	15E	3, 10
133	AMC388941	CS-212	2007-017176	1S	15E	10
134	AMC388942	CS-213	2007-017177	1S	15E	10
135	AMC388943	CS-214	2007-017178	1S	15E	10
136	AMC388945	CS-216	2007-017180	1S	15E	3
137	AMC388946	CS-217	2007-017181	1S	15E	3
138	AMC388947	CS-218	2007-017182	1S	15E	3
139	AMC388948	CS-219	2007-017183	1S	15E	3
140	AMC388949	CS-220	2007-017184	1S	15E	3
141	AMC388950	CS-221	2007-017185	1S	15E	3
142	AMC388951	CS-222	2007-017186	1S	15E	3, 10
143	AMC388952	CS-223	2007-017187	1S	15E	10
144	AMC388953	CS-224	2007-017188	1S	15E	3
145	AMC388954	CS-225	2007-017189	1S	15E	3
146	AMC388955	CS-226	2007-017190	1S	15E	3
147	AMC388956	CS-227	2007-017191	1S	15E	3
148	AMC388957	CS-228	2007-017192	1S	15E	3
149	AMC388958	CS-229	2007-017193	1S	15E	3
150	AMC388959	CS-230	2007-017194	1S	15E	2, 3
151	AMC388960	CS-231	2007-017195	1S	15E	2, 3
152	AMC388961	CS-232	2007-017196	1S	15E	2, 3
153	AMC388962	CS-233	2007-017197	1S	15E	2, 3
154	AMC426597	CS-234	2014-000969	1S	15E	4
155	AMC426598	CS-235	2014-000970	1S	15E	4
156	AMC426599	CS-236	2014-000971	1S	15E	5
157	AMC426600	CS-237	2014-000972	1S	15E	5
158	AMC389883	CSN 1	2008-001699	1N; 1S	15E	3
159	AMC389884	CSN 2	2008-001700	1N; 1S	15E	3
160	AMC389885	CSN 3	2008-001701	1N; 1S	15E	3
161	AMC389886	CSN 4	2008-001702	1N; 1S	15E	3
162	AMC389887	CSN 5	2008-001703	1N; 1S	15E	3
163	AMC389888	CSN 6	2008-001704	1N; 1S	15E	3
164	AMC389889	CSN 7	2008-001705	1N; 1S	15E	3
165	AMC389890	CSN 8	2008-001706	1N; 1S	15E	35; 3
166	AMC389891	CSN 9	2008-001707	1N	15E	35

RECEIVED
 BLM AZ STATE OFFICE
 PHOENIX, ARIZONA
 AUG 25 2015

Bronco Creek Exploration, Inc.
August 25, 2015

Exhibit A

Gila County
Arizona

Project: Copper Springs

167	AMC389892	CSN 10	2008-001708	1N	15E	35
168	AMC389893	CSN 11	2008-001709	1N	15E	35
169	AMC389894	CSN 12	2008-001710	1N	15E	35
170	AMC389895	CSN 13	2008-001711	1N	15E	35
171	AMC389896	CSN 14	2008-001712	1N	15E	35
172	AMC389897	CSN 15	2008-001713; 2010-010709	1N	15E	35
173	AMC389898	CSN 16	2008-001714; 2010-010710	1N	15E	35
174	AMC389899	CSN 17	2008-001715	1N	15E	35
175	AMC389900	CSN 18	2008-001716	1N	15E	35
176	AMC389901	CSN 19	2008-001717	1N	15E	35
177	AMC389902	CSN 20	2008-001718	1N	15E	35
178	AMC389903	CSN 21	2008-001719; 2010-010711	1N	15E	35
179	AMC389904	CSN 22	2008-001720; 2010-010712	1N	15E	35
180	AMC389905	CSN 23	2008-001721; 2010-010713	1N	15E	35
181	AMC389906	CSN 24	2008-001722	1N	15E	35
182	AMC389907	CSN 25	2008-001723; 2010-010714	1N	15E	35
183	AMC401281	CSN-26	2010-006515	1N	15E	26, 35
184	AMC401282	CSN-27	2010-006516	1N	15E	26, 35
185	AMC401283	CSN-28	2010-006517	1N	15E	26, 35
186	AMC401284	CSN-29	2010-006518	1N	15E	26, 35
187	AMC401285	CSN-30	2010-006519	1N	15E	26, 35
188	AMC401286	CSN-31	2010-006697	1N	15E	26
189	AMC401287	CSN-32	2010-006698	1N	15E	26
190	AMC401288	CSN-33	2010-006520	1N	15E	35
191	AMC401289	CSN-34	2010-006521	1N; 1S	15E	35; 3
192	AMC399816	CSNW 1	2010-002695	1N	15E	35
193	AMC399817	CSNW 2	2010-002696	1N	15E	35
194	AMC399818	CSNW 3	2010-002697	1N	15E	35
195	AMC399819	CSNW 4	2010-002698	1N	15E	35
196	AMC399820	CSNW 5	2010-002699	1N	15E	35
197	AMC399821	CSNW 6	2010-002700	1N	15E	35
198	AMC399822	CSNW 7	2010-002701	1N	15E	35
199	AMC399823	CSNW 8	2010-002702	1N	15E	35
200	AMC399824	CSNW 9	2010-002703	1N	15E	35
201	AMC399825	CSNW 10	2010-002704	1N	15E	35

PHOENIX, ARIZONA

RECEIVED
BLM AZ STATE OFFICE
2015 AUG 26 10:55

Bronco Creek Exploration, Inc.
August 25, 2015

Exhibit A

Gila County
Arizona

Project: Copper Springs

202	AMC399826	CSNW 11	2010-002705	1N	15E	34, 35
203	AMC399827	CSNW 12	2010-002706	1N	15E	34
204	AMC399828	CSNW 13	2010-002707	1N	15E	34, 35
205	AMC399829	CSNW 14	2010-002708	1N	15E	34
206	AMC399830	CSNW 15	2010-002709	1N	15E	34, 35
207	AMC399831	CSNW 16	2010-002710	1N	15E	34
208	AMC399832	CSNW 17	2010-002711	1N	15E	34
209	AMC399833	CSNW 18	2010-002712	1N	15E	34
210	AMC399834	CSNW 19	2010-002713	1N	15E	34, 35
211	AMC399835	CSNW 20	2010-002714	1N	15E	34, 35
212	AMC399836	CSNW 21	2010-002715	1N; 1S	15E	34; 4
213	AMC399837	CSNW 22	2010-002716	1N; 1S	15E	34; 4
214	AMC399838	CSNW 23	2010-002717	1N	15E	34; 3, 4
215	AMC399839	CSNW 24	2010-002718	1N	15E	34
216	AMC399840	CSNW 25	2010-002719	1N	15E	34, 35

PHOENIX, ARIZONA

2015 AUG 26 A 9:56

RECEIVED
BLM AZ STATE OFFICE



Bronco Creek Exploration Inc.
1815 East Winsett Street
Tucson, Arizona 85719-6547

Tel: 624-4153
Fax: (520) 624-4192
www.broncocreek.com

August 25, 2015

After recording, return to:
Bronco Creek Exploration, Inc.
Attention: Chelsea Kreiner
1815 East Winsett Street
Tucson, AZ 85719-6547

Bureau of Land Management
One North Central Avenue, Suite 800
Phoenix, AZ 85004-4427
(602) 417-9200

Attn: Mining Claims

Please accept the following 2015-2016 maintenance fee payment documentation enclosed on behalf of the claimant, Bronco Creek Exploration, Inc., of 1815 East Winsett Street, Tucson, Arizona 85719:

- Maintenance Fee Payment document form 3830-5
- Exhibit A- List of mining claims and AMC numbers
- Check # 3033 for the amount of \$33,480 to cover the 2015-2016 maintenance fees required of \$155.00 per claim for the 216 unpatented mining claims located in Gila County, Arizona.

If there are any questions or problems, please contact me at (520) 624-4153, ckreiner@broncocreek.com or at the address above. Thank you very much for your assistance.

Sincerely,

A handwritten signature in cursive script that reads "Chelsea Kreiner".

Chelsea Kreiner
Land & Permitting Manager

RECEIVED
BLM AZ STATE OFFICE
2015 AUG 25 A 9:55
PHOENIX, ARIZONA

2015 AUG 26 A 9:56

PHOENIX, ARIZONA

<https://www.fedex.com/shipping/html/en/PrintFrame.html>

ORIGIN ID: TUSA (520) 824-4153
ANDREW FAULKNER
BRONCO CREEK EXPLORATION INC.
1815 E. WINSETT ST.

TUCSON, AZ 85719
UNITED STATES US

SHIP DATE: 25AUG15
ACTWGT: 0.50 LB
CAD: 100315405/NET3870

BILL SENDER

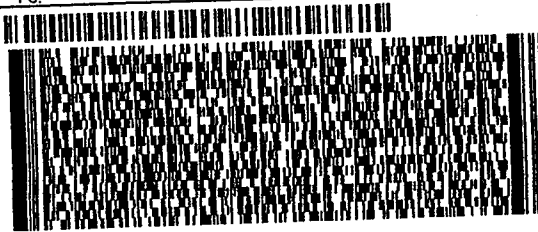
TO BUREAU OF LAND MANAGEMENT
ARIZONA STATE OFFICE
1 N CENTRAL AVE
STE 800
PHOENIX AZ 85004

538J1FECA9100

(602) 417-9200
INV:
PO:

REF:

DEPT:



FedEx
Express



1122116238414

WED - 26 AUG AA
STANDARD OVERNIGHT

TRK# 7743 6355 6960
0201

XH ZSYA

85004
AZ-US PHX



earth smart

Align top of carrier with shipping label here

ok

United States Department of the Interior
Bureau of Land Management
LANDS/RECREATION & PLANNING
ONE N CENTRAL AVE
PHOENIX, AZ 85004 -2203
Phone: 602-417-9200

Receipt

No: 3378731

Transaction #: 3476982	
Date of Transaction: 08/27/2015	
CUSTOMER:	
BRONCO CREEK EXPLORATION INC. 1815 E WINSETT ST TUCSON, AZ 85719-6547 US	

LINE #	QTY	DESCRIPTION	REMARKS	UNIT PRICE	TOTAL
1	1.00	LOCATABLE MINERALS / MINING CLAIMS-NOT NEW-UNADJUD, ONE AUTH NO. ONLY / MINING CLAIM MONEY RECEIVED CASES: AMC388780/\$33480.00	MAINT FEE PYMNT - 216 2016	- n/a -	33480.00
TOTAL:					\$33,480.00

PAYMENT INFORMATION					
1	AMOUNT:	33480.00	POSTMARKED:	08/25/2015	
	TYPE:	CHECK	RECEIVED:	08/26/2015	
	CHECK NO:	3033			
	NAME:	BRONCO CREEK EXPLORATION 1815 E WINSETT ST TUCSON AZ 85719-6547 US			

REMARKS

This receipt was generated by the automated BLM Collections and Billing System and is a paper representation of a portion of the official electronic record contained therein.



Bronco Creek Exploration Inc.
1815 East Winsett Street
Tucson, Arizona 85719-6547

Tel: (520) 624-4153
Fax: (520) 624-4192
www.broncocreek.com

388772
389883
399816
401281
417327
426597
429005

August 27, 2014

After recording, return to:
Bronco Creek Exploration, Inc.
Attention: Chelsea Kreiner
1815 East Winsett Street
Tucson, AZ 85719-6547

NO. OF CLAIMS 253
AMOUNT 39215
RECEIPT NO. 3116270
INIT. SC

** BLM-ASO**

Bureau of Land Management
One North Central Avenue, Suite 800
Phoenix, AZ 85004-4427
(602) 417-9200

Attn: Mining Claims

Please accept the following 2014-2015 maintenance fee payment documentation enclosed on behalf of the claimant, Bronco Creek Exploration, Inc., of 1815 East Winsett Street, Tucson, Arizona 85719:

- New Claim Location Notices and Maps for CS-154A and CS-172A located on July 28, 2014 in Gila County, Arizona
- Maintenance Fee Payment document form 3830-5
- Exhibit A- List of mining claims and AMC numbers
- Check # 2335 totaling \$39,603; of which \$388 is to cover the new claim filing fees of \$194 per claim and \$39,215 is to cover the 2014-2015 maintenance fees required of \$155.00 per claim for the 253 unpatented mining claims located in Gila County, Arizona.

If there are any questions or problems, please contact me at (520) 624-4153, ckreiner@broncocreek.com or at the address above. Thank you very much for your assistance.

Sincerely,

Chelsea Kreiner
Land & Permitting Manager

RECEIVED
BLM, AZ STATE OFFICE
2014 AUG 28 P 3:42
PHOENIX, AZ

**UNITED STATES
DEPARTMENT OF THE INTERIOR
BUREAU OF LAND MANAGEMENT
MAINTENANCE FEE PAYMENT FORM FOR
LODE CLAIMS, MILL SITES, AND TUNNEL SITES**

Remitter Name: Bronco Creek Exploration, Inc.
 Mailing Address: 1815 E Winsett St.
 City, State, Zip: Tucson, AZ 85719

Check here if this is a change of address.

FOR COUNTY RECORDER'S USE

No. of claims/sites 253
 x \$155 per claim/site
 Total due BLM \$ 39215

- The maintenance fee may be paid by cash, check, money order, Bureau of Land Management (BLM) Declining Deposit Account, or credit card (VISA, American Express, Discover, or MasterCard). Payments must be remitted to the BLM State Office where your claim or site is recorded and received on or before September 1. If the payment is mailed, the envelope must be postmarked by a bona fide delivery service on or before September 1 and received at the proper BLM State Office within 15 calendar days after the due date. Payments may also be made by telephone using a credit card. A complete listing of BLM State Offices with their addresses and phone numbers can be found at <http://www.blm.gov>.
- The maintenance fee for the following claim(s)/site(s) applies to the assessment year 14-15.

CLAIM/SITE NAME	BLM SERIAL NO.
See attached sheet(s)	

RECEIVED
 BLM AZ STATE OFFICE
 2014 AUG 28 P 3:42
 PHOENIX, AZ

Use a separate sheet for additional claim/site names, serial numbers, and claimant names and addresses.

Bronco Creek Exploration, Inc.
August 27, 2014

Exhibit A

Gila County
Arizona

Project: Copper Springs

Line No.	BLM Serial No	Claim Name	County Recorder	Twn	Rng	Sec
			Fee #/ Doc ID#			
1	AMC388772	CS-22	2007-017007	1S	15E	6
2	AMC388773	CS-23	2007-017008	1S	15E	6
3	AMC388774	CS-24	2007-017009	1S	15E	6
4	AMC388775	CS-25	2007-017010	1S	15E	6
5	AMC388776	CS-26	2007-017011	1S	15E	6
6	AMC388777	CS-27	2007-017012	1S	15E	6, 7
7	AMC388778	CS-28	2007-017013	1S	15E	7
8	AMC388779	CS-29	2007-017014	1S	15E	7
9	AMC388780	CS-30	2007-017015	1S	15E	7
10	AMC388781	CS-31	2007-017016	1S	15E	7
11	AMC388782	CS-32	2007-017017	1S	15E	7
12	AMC388783	CS-33	2007-017018	1S	15E	7
13	AMC388784	CS-34	2007-017019	1S	15E	7
14	AMC388785	CS-35	2007-017020	1S	15E	7
15	AMC388786	CS-42	2007-017021	1S	15E	7
16	AMC388787	CS-43	2007-017022	1S	15E	6
17	AMC388788	CS-44	2007-017023	1S	15E	6
18	AMC388789	CS-45	2007-017024	1S	15E	6
19	AMC388790	CS-46	2007-017025	1S	15E	6
20	AMC388791	CS-47	2007-017026	1S	15E	6
21	AMC388792	CS-48	2007-017027	1S	15E	6
22	AMC388793	CS-49	2007-017028	1S	15E	6
23	AMC388794	CS-50	2007-017029	1S	15E	6
24	AMC388795	CS-51	2007-017030	1S	15E	6
25	AMC388796	CS-52	2007-017031	1S	15E	6
26	AMC388797	CS-53	2007-017032	1S	15E	6
27	AMC388798	CS-54	2007-017033	1S	15E	6
28	AMC388799	CS-55	2007-017034	1S	15E	6
29	AMC388800	CS-61	2007-017035	1S	15E	5, 6
30	AMC388801	CS-62	2007-017036	1S	15E	5, 6
31	AMC388802	CS-63	2007-017037	1S	15E	5, 6
32	AMC388803	CS-64	2007-017038	1S	15E	5, 6
33	AMC388804	CS-65	2007-017039	1S	15E	5, 6
34	AMC388805	CS-66	2007-017040	1S	15E	5, 6
35	AMC388806	CS-67	2007-017041	1S	15E	5, 6
36	AMC388807	CS-68	2007-017042	1S	15E	5, 6, 7, 8
37	AMC388808	CS-69	2007-017043	1S	15E	7, 8
38	AMC388809	CS-70	2007-017044	1S	15E	7, 8
39	AMC388810	CS-71	2007-017045	1S	15E	7, 8

RECEIVED
 B.L.M. AZ STATE OFFICE
 PHOENIX, AZ
 2014 AUG 28 10:42

Bronco Creek Exploration, Inc.
August 27, 2014

Exhibit A

Gila County
Arizona

Project: Copper Springs

40	AMC388811	CS-72	2007-017046	1S	15E	7, 8
41	AMC388812	CS-73	2007-017047	1S	15E	7, 8
42	AMC388813	CS-74	2007-017048	1S	15E	7, 8
43	AMC388814	CS-75	2007-017049	1S	15E	7, 8
44	AMC388815	CS-76	2007-017050	1S	15E	7, 8, 17, 18
45	AMC388816	CS-77	2007-017051	1S	15E	17, 18
46	AMC388817	CS-78	2007-017052	1S	15E	17, 18
47	AMC388818	CS-79	2007-017053	1S	15E	17, 18
48	AMC388819	CS-80	2007-017054	1S	15E	17, 18
49	AMC388820	CS-81	2007-017055	1S	15E	17, 18
50	AMC388821	CS-82	2007-017056	1S	15E	5
51	AMC388822	CS-83	2007-017057	1S	15E	5
52	AMC388823	CS-84	2007-017058	1S	15E	5
53	AMC388824	CS-85	2007-017059	1S	15E	5
54	AMC388825	CS-86	2007-017060	1S	15E	5
55	AMC388826	CS-87	2007-017061	1S	15E	5
56	AMC388827	CS-88	2007-017062	1S	15E	5
57	AMC388828	CS-89	2007-017063	1S	15E	8
58	AMC388829	CS-90	2007-017064	1S	15E	8
59	AMC388830	CS-91	2007-017065	1S	15E	8
60	AMC388831	CS-92	2007-017066	1S	15E	8
61	AMC388832	CS-93	2007-017067	1S	15E	8
62	AMC388833	CS-94	2007-017069	1S	15E	8
63	AMC388834	CS-95	2007-017070	1S	15E	8
64	AMC388835	CS-96	2007-017071	1S	15E	8
65	AMC388836	CS-97	2007-017072	1S	15E	8
66	AMC388837	CS-98	2007-017073	1S	15E	8
67	AMC388838	CS-99	2007-017074	1S	15E	8
68	AMC388839	CS-100	2007-017075	1S	15E	8
69	AMC388841	CS-102	2007-017077	1S	15E	8
70	AMC388842	CS-103	2007-017078	1S	15E	8
71	AMC388843	CS-104	2007-017079	1S	15E	8
72	AMC388844	CS-105	2007-017080	1S	15E	8
73	AMC388845	CS-106	2007-017081	1S	15E	8
74	AMC388846	CS-107	2007-017082	1S	15E	8
75	AMC388847	CS-108	2007-017083	1S	15E	5, 8
76	AMC388848	CS-109	2007-017084	1S	15E	8
77	AMC388849	CS-110	2007-017085	1S	15E	8
78	AMC388850	CS-111	2007-017086	1S	15E	8
79	AMC388851	CS-112	2007-017087	1S	15E	8
80	AMC388852	CS-113	2007-017088	1S	15E	8

PHOENIX, AZ

2014 AUG 28 10:32 AM

RECEIVED
B.L.M. AZ STATE OFFICE

Bronco Creek Exploration, Inc.
August 27, 2014

Exhibit A

Gila County
Arizona

Project: Copper Springs

81	AMC388853	CS-114	2007-017089	1S	15E	8
82	AMC388854	CS-115	2007-017090	1S	15E	8
83	AMC388855	CS-116	2007-017091	1S	15E	8, 17
84	AMC388856	CS-117	2007-017092	1S	15E	17
85	AMC388857	CS-118	2007-017093	1S	15E	17
86	AMC417327	CS-121A	2012-008627	1S	15E	4, 5
87	AMC388859	CS-122	2007-017095	1S	15E	4, 5
88	AMC388860	CS-123	2007-017096	1S	15E	4, 5
89	AMC388861	CS-124	2007-017097	1S	15E	4, 5
90	AMC388862	CS-125	2007-017098	1S	15E	4, 5
91	AMC388863	CS-126	2007-017099	1S	15E	4, 5
92	AMC388864	CS-127	2007-017100	1S	15E	4, 5, 8, 9
93	AMC388865	CS-128	2007-017101	1S	15E	8, 9
94	AMC388866	CS-129	2007-017102	1S	15E	8, 9
95	AMC388867	CS-130	2007-017103	1S	15E	8, 9
96	AMC388868	CS-131	2007-017068	1S	15E	8, 9
97	AMC388869	CS-132	2007-017104	1S	15E	8, 9
98	AMC388870	CS-133	2007-017105	1S	15E	8, 9
99	AMC388871	CS-134	2007-017106	1S	15E	8, 9
100	AMC388872	CS-135	2007-017107	1S	15E	8, 9
101	AMC388873	CS-136	2007-017108	1S	15E	8, 9, 16, 17
102	AMC388874	CS-137	2007-017109	1S	15E	16, 17
103	AMC388875	CS-138	2007-017110	1S	15E	16, 17
104	AMC388876	CS-141	2007-017111	1S	15E	4
105	AMC388877	CS-142	2007-017112	1S	15E	4
106	AMC388878	CS-143	2007-017113	1S	15E	4
107	AMC388879	CS-144	2007-017114	1S	15E	4
108	AMC388880	CS-145	2007-017115	1S	15E	4
109	AMC388881	CS-146	2007-017116	1S	15E	4
110	AMC388882	CS-147	2007-017117	1S	15E	4
111	AMC388883	CS-148	2007-017118	1S	15E	4
112	AMC388884	CS-149	2007-017119	1S	15E	4
113	AMC388885	CS-150	2007-017120	1S	15E	4
114	AMC388886	CS-151	2007-017121	1S	15E	4
115	AMC388887	CS-152	2007-017122	1S	15E	4
116	AMC388888	CS-153	2007-017123	1S	15E	4
117	Not Assigned	CS-154A	Not Assigned	1S	15E	9
118	AMC388890	CS-159	2007-017125	1S	15E	4
119	AMC388891	CS-160	2007-017126	1S	15E	4
120	AMC388892	CS-161	2007-017127	1S	15E	4
121	AMC388893	CS-162	2007-017128	1S	15E	4

Amc
429005

RECEIVED
B.L.M. AZ STATE OFFICE
JUL 28 9 3: 42
PHOENIX, AZ

Bronco Creek Exploration, Inc.
August 27, 2014

Exhibit A
Project: Copper Springs

Gila County
Arizona

122	AMC388894	CS-163	2007-017129	1S	15E	4
123	AMC388895	CS-164	2007-017130	1S	15E	4
124	AMC388896	CS-165	2007-017131	1S	15E	4, 9
125	AMC388897	CS-166	2007-017132	1S	15E	9
126	AMC388898	CS-167	2007-017133	1S	15E	9
127	AMC388899	CS-168	2007-017134	1S	15E	9
128	AMC388900	CS-169	2007-017135	1S	15E	9
129	AMC388901	CS-170	2007-017136	1S	15E	9
130	AMC388902	CS-171	2007-017137	1S	15E	9
131	Not Assigned	CS-172A	Not Assigned	1S	15E	9
132	AMC388904	CS-175	2007-017139	1S	15E	4
133	AMC388905	CS-176	2007-017140	1S	15E	4
134	AMC388906	CS-177	2007-017141	1S	15E	4
135	AMC388907	CS-178	2007-017142	1S	15E	4
136	AMC388908	CS-179	2007-017143	1S	15E	4
137	AMC388909	CS-180	2007-017144	1S	15E	4
138	AMC388910	CS-181	2007-017145	1S	15E	4, 9
139	AMC388911	CS-182	2007-017146	1S	15E	9
140	AMC388912	CS-183	2007-017147	1S	15E	9
141	AMC388913	CS-184	2007-017148	1S	15E	9
142	AMC388914	CS-185	2007-017149	1S	15E	9
143	AMC388915	CS-186	2007-017150	1S	15E	9
144	AMC388916	CS-187	2007-017151	1S	15E	9
145	AMC388917	CS-188	2007-017152	1S	15E	9
146	AMC388918	CS-189	2007-017153	1S	15E	9
147	AMC388919	CS-190	2007-017154	1S	15E	9, 16
148	AMC388920	CS-191	2007-017155	1S	15E	9, 16
149	AMC388921	CS-192	2007-017156	1S	15E	9, 16
150	AMC388922	CS-193	2007-017157	1S	15E	9, 16
151	AMC388923	CS-194	2007-017158	1S	15E	9, 16
152	AMC388924	CS-195	2007-017159	1S	15E	9, 16
153	AMC388925	CS-196	2007-017160	1S	15E	9, 16
154	AMC388926	CS-197	2007-017161	1S	15E	9, 16
155	AMC388927	CS-198	2007-017162	1S	15E	9, 16
156	AMC388928	CS-199	2007-017163	1S	15E	9, 16
157	AMC388929	CS-200	2007-017164	1S	15E	9, 16
158	AMC388930	CS-201	2007-017165	1S	15E	9, 16
159	AMC388931	CS-202	2007-017166	1S	15E	9, 16
160	AMC388932	CS-203	2007-017167	1S	15E	9, 16
161	AMC388933	CS-204	2007-017168	1S	15E	9, 16
162	AMC388934	CS-205	2007-017169	1S	15E	3

Amc 129006

RECEIVED
 B.L.M. AZ STATE OFFICE
 PHOENIX, AZ
 3, 4, 9, 10

Bronco Creek Exploration, Inc.
August 27, 2014

Exhibit A

Gila County
Arizona

Project: Copper Springs

163	AMC388935	CS-206	2007-017170	1S	15E	3
164	AMC388936	CS-207	2007-017171	1S	15E	3
165	AMC388937	CS-208	2007-017172	1S	15E	3
166	AMC388938	CS-209	2007-017173	1S	15E	3
167	AMC388939	CS-210	2007-017174	1S	15E	3
168	AMC388940	CS-211	2007-017175	1S	15E	3, 10
169	AMC388941	CS-212	2007-017176	1S	15E	10
170	AMC388942	CS-213	2007-017177	1S	15E	10
171	AMC388943	CS-214	2007-017178	1S	15E	10
172	AMC388944	CS-215	2007-017179	1S	15E	10
173	AMC388945	CS-216	2007-017180	1S	15E	3
174	AMC388946	CS-217	2007-017181	1S	15E	3
175	AMC388947	CS-218	2007-017182	1S	15E	3
176	AMC388948	CS-219	2007-017183	1S	15E	3
177	AMC388949	CS-220	2007-017184	1S	15E	3
178	AMC388950	CS-221	2007-017185	1S	15E	3
179	AMC388951	CS-222	2007-017186	1S	15E	3, 10
180	AMC388952	CS-223	2007-017187	1S	15E	10
181	AMC388953	CS-224	2007-017188	1S	15E	3
182	AMC388954	CS-225	2007-017189	1S	15E	3
183	AMC388955	CS-226	2007-017190	1S	15E	3
184	AMC388956	CS-227	2007-017191	1S	15E	3
185	AMC388957	CS-228	2007-017192	1S	15E	3
186	AMC388958	CS-229	2007-017193	1S	15E	3
187	AMC388959	CS-230	2007-017194	1S	15E	2, 3
188	AMC388960	CS-231	2007-017195	1S	15E	2, 3
189	AMC388961	CS-232	2007-017196	1S	15E	2, 3
190	AMC388962	CS-233	2007-017197	1S	15E	2, 3
191	AMC426597	CS-234	2014-000969	1S	15E	4
192	AMC426598	CS-235	2014-000970	1S	15E	4
193	AMC426599	CS-236	2014-000971	1S	15E	4
194	AMC426600	CS-237	2014-000972	1S	15E	4, 5
195	AMC389883	CSN 1	2008-001699	1N;1S	15E	35;3
196	AMC389884	CSN 2	2008-001700	1N;1S	15E	35;3
197	AMC389885	CSN 3	2008-001701	1N;1S	15E	35;3
198	AMC389886	CSN 4	2008-001702	1N;1S	15E	35;3
199	AMC389887	CSN 5	2008-001703	1N;1S	15E	35;3
200	AMC389888	CSN 6	2008-001704	1N;1S	15E	35;3
201	AMC389889	CSN 7	2008-001705	1N;1S	15E	35;3
202	AMC389890	CSN 8	2008-001706	1N;1S	15E	35;3
203	AMC389891	CSN 9	2008-001707	1N	15E	35

RECEIVED
B.L.M. AZ STATE OFFICE
2014 AUG 28 P 3:42

Bronco Creek Exploration, Inc.
August 27, 2014

Exhibit A

Gila County
Arizona

Project: Copper Springs

204	AMC389892	CSN 10	2008-001708	1N	15E	35
205	AMC389893	CSN 11	2008-001709	1N	15E	35
206	AMC389894	CSN 12	2008-001710	1N	15E	35
207	AMC389895	CSN 13	2008-001711	1N	15E	35
208	AMC389896	CSN 14	2008-001712	1N	15E	35
209	AMC389897	CSN 15	08-001713; 2010-0107	1N	15E	35
210	AMC389898	CSN 16	08-001714; 2010-0107	1N	15E	35
211	AMC389899	CSN 17	2008-001715	1N	15E	35
212	AMC389900	CSN 18	2008-001716	1N	15E	35
213	AMC389901	CSN 19	2008-001717	1N	15E	35
214	AMC389902	CSN 20	2008-001718	1N	15E	35
215	AMC389903	CSN 21	08-001719; 2010-0107	1N	15E	35
216	AMC389904	CSN 22	08-001720; 2010-0107	1N	15E	35
217	AMC389905	CSN 23	08-001721; 2010-0107	1N	15E	35
218	AMC389906	CSN 24	2008-001722	1N	15E	35
219	AMC389907	CSN 25	08-001723; 2010-0107	1N	15E	35
220	AMC401281	CSN-26	2010-006515	1N	15E	26, 35
221	AMC401282	CSN-27	2010-006516	1N	15E	26, 35
222	AMC401283	CSN-28	2010-006517	1N	15E	26, 35
223	AMC401284	CSN-29	2010-006518	1N	15E	26, 35
224	AMC401285	CSN-30	2010-006519	1N	15E	26, 35
225	AMC401286	CSN-31	2010-006697	1N	15E	26, 35
226	AMC401287	CSN-32	2010-006698	1N	15E	26, 35
227	AMC401288	CSN-33	2010-006520	1N	15E	26, 35
228	AMC401289	CSN-34	2010-006521	1N; 1S	15E	35; 3
229	AMC399816	CSNW 1	2010-002695	1N	15E	34
230	AMC399817	CSNW 2	2010-002696	1N	15E	34
231	AMC399818	CSNW 3	2010-002697	1N	15E	34, 35
232	AMC399819	CSNW 4	2010-002698	1N	15E	34
233	AMC399820	CSNW 5	2010-002699	1N	15E	34
234	AMC399821	CSNW 6	2010-002700	1N	15E	34, 35
235	AMC399822	CSNW 7	2010-002701	1N	15E	34
236	AMC399823	CSNW 8	2010-002702	1N	15E	34
237	AMC399824	CSNW 9	2010-002703	1N	15E	34
238	AMC399825	CSNW 10	2010-002704	1N	15E	34

PHOENIX, AZ

RECEIVED
B.L.M. AZ STATE OFFICE

Bronco Creek Exploration, Inc.
August 27, 2014

Exhibit A

Gila County
Arizona

Project: Copper Springs

239	AMC399826	CSNW 11	2010-002705	1N	15E	34, 35
240	AMC399827	CSNW 12	2010-002706	1N	15E	34
241	AMC399828	CSNW 13	2010-002707	1N	15E	34, 35
242	AMC399829	CSNW 14	2010-002708	1N	15E	34
243	AMC399830	CSNW 15	2010-002709	1N	15E	34, 35
244	AMC399831	CSNW 16	2010-002710	1N	15E	34
245	AMC399832	CSNW 17	2010-002711	1N	15E	34
246	AMC399833	CSNW 18	2010-002712	1N	15E	34
247	AMC399834	CSNW 19	2010-002713	1N	15E	34, 35
248	AMC399835	CSNW 20	2010-002714	1N	15E	34, 35
249	AMC399836	CSNW 21	2010-002715	1N;1S	15E	34;4
250	AMC399837	CSNW 22	2010-002716	1N;1S	15E	34;4
251	AMC399838	CSNW 23	2010-002717	1N	15E	34; 3, 4
252	AMC399839	CSNW 24	2010-002718	1N	15E	34
253	AMC399840	CSNW 25	2010-002719	1N	15E	34, 35

PHOENIX, AZ

2014 AUG 28 P 3:42

RECEIVED
BLM, AZ STATE OFFICE

United States Department of the Interior
Bureau of Land Management
 LANDS/RECREATION & PLANNING
 ONE N CENTRAL AVE
 PHOENIX, AZ 85004 -2203
 Phone: 602-417-9200

Receipt

No: 3116270

Transaction #: 3208015	
Date of Transaction: 08/28/2014	
CUSTOMER:	
BRONCO CREEK EXPLORATION INC. 1815 E WINSETT ST TUCSON, AZ 85719-6547 US	

LINE #	QTY	DESCRIPTION	REMARKS	UNIT PRICE	TOTAL
1	2.00	LOCATABLE MINERALS / MINING CLAIMS- NEW, UNADJUD, ONE OR MORE AUTH NOS / NEW MINING CLAIM LOCATION FEE \$34 CASES: AMC429005/\$34.00, AMC429006/\$34.00		- n/a -	68.00
2	2.00	LOCATABLE MINERALS / MINING CLAIMS- NEW, UNADJUD, ONE OR MORE AUTH NOS / NEW MINING CLAIM MAINT FEE \$140 CASES: AMC429005/\$140.00, AMC429006/ \$140.00		- n/a -	280.00
3	2.00	LOCATABLE MINERALS / MINING CLAIMS- NEW, UNADJUD, ONE OR MORE AUTH NOS / NEW MINING CLAIM PROCESSING FEE CASES: AMC429005/\$20.00, AMC429006/\$20.00		- n/a -	40.00
4	1.00	LOCATABLE MINERALS / MINING CLAIMS- NOT NEW-UNADJUD, ONE AUTH NO. ONLY / MINING CLAIM MONEY RECEIVED CASES: AMC388772/\$39215.00	MAINT (253) 2015	- n/a -	39215.00
TOTAL:					\$39,603.00

PAYMENT INFORMATION			
1	AMOUNT:	39603.00	POSTMARKED: N/A
	TYPE:	CHECK	RECEIVED: 08/28/2014
	CHECK NO:	2335	
	NAME:	BRONCO CREEK EXPLORATION INC. 1815 E WINSETT ST TUCSON AZ 85719-6547 US	

REMARKS

This receipt was generated by the automated BLM Collections and Billing System and is a paper representation of a portion of the official electronic record contained therein.

NOTICE!!

These documents have been scanned!

Do not place un-scanned documents beneath this notice!

Do not remove this notice from this file!

GPO Jacket No. 560-102
Print Order 61540
Rise Business Services, LLC
Job=AZ15 5/10/2019



Box Number= AZ15032



Claim Begin-End: AMC429005-AMC429006

5 Miscellaneous



AZ15032-5

AMC428906-AMC429539

**NO
DOCUMENTS
FOUND**

NO DOCUMENTS FOUND
NO DOCUMENTS FOUND

NOTICE!!

These documents have been scanned!

Do not place un-scanned documents beneath this notice!

Do not remove this notice from this file!

GPO Jacket No. 560-102
Print Order 61540
Rise Business Services, LLC
Job=AZ15 5/10/2019



Box Number= AZ15032



Claim Begin-End: AMC429005-AMC429006

6 Location Notices-Amendments and Supporting Documents



AZ15032-5 AMC428906-AMC429539

MINING CLAIM STATUS REPORT

Data Entered: 09/12/14 RAM

MTP Checked By: 09/12/14 RAM
GEO Checked By: 09/12/14 RAM

LEAD SERIAL NUMBER: AMC 429005 thru AMC 429006

NUMBER OF CLAIMS & TYPE:

- 2 LODE
- PLACER
- ASSOCIATION PLACER
- MILL SITE
- TUNNEL SITE

CHARGES:

Location Fee @ \$34 = \$ 68

Processing Fee @ \$20 = \$ 40

Maintenance Fee @ \$140 = \$ 280 280

Add'l Maint Fee for Assoc Placer = \$ 310

SUBTOTAL \$ 388

~~2015 Maint~~ Other Fees \$ 310.00

Other Fees \$ _____

TOTAL \$ ~~388~~ 388

TOTAL ACREAGE: _____ Per Claim
(Placer Only)

NUMBER OF LOCATORS: _____

DOCUMENTS RECEIVED VIA: Over-the-Counter Mail **TIMELY FILED:** Yes No

LEGAL DESCRIPTION: T 15 R 15E SEC 9

T _____ R _____ SEC _____

T _____ R _____ SEC _____

T _____ R _____ SEC _____

T _____ R _____ SEC _____

BLM FOREST SERVICE SUBJ TO PL 359: Yes No
WILDERNESS AREA

SPLIT ESTATE: N/A SX PX OTHER
SRHA Was proper Notice filed if located on SHRA Land? Yes No

RECONVEYED MINERALS ON BLM LAND REQUIRE OPENING ORDER FROM 1944 TO 1993:

Open to Entry On _____ N/A

COMMENTS/STATUS: VOID PARTIALLY VOID PVT MINERALS WITHDRAWN LANDS
OTHER

Claimant acknowledges that portions of the following claim(s) site(s) may be void or voidable.

Printed Name of Claimant _____ Signature of Claimant _____

*****FINAL ADJUDICATION*****

DATE 8/31/2015 INITIALS RAM

PAID 2015 maint under the claim name 8/28/14 SC

**LOCATION NOTICE FOR
LODE MINING CLAIM**

NOTICE IS HEREBY GIVEN that the **CS-154A**
lode mining claim has been amended by:
Bronco Creek Exploration, Inc.
1815 E. Winsett St., Tucson, Arizona 85719.

RECEIVED
B.L.M. AZ STATE OFFICE
2014 AUG 28 P 3:36
PHOENIX, AZ

The general course of this claim is **east - west** and it is situated in **Gila County, Arizona**. This claim is **1,500** feet in length and **600** feet in width. This claim runs from the location monument on which this location notice is posted approximately **5** feet in a **west** direction to the **west** end line and **1,495** feet in a **east** direction to the **east** end line. This claim is marked by six monuments, one at each corner and one at the center of each end line of the claim.

The location monument on which this notice is posted is situated within **Section 9, Township 1S, Range 15E, Gila Salt River Base and Meridian, Arizona** and this claim encompasses portions of the following quarter section (s), section (s), Township (s) and Range (s):

SW1/4 Sec. 9, T1S, R15E

Gila Salt River Base and Meridian, Arizona.

The locality of this claim with reference to some natural object or permanent monument and additional information (if any) concerning its locality are as follows: The northeast corner of the claim is:

7,867 feet south and **1,561** feet west of the south $\frac{1}{4}$ Section marker of Section 34 T1N, R15E.

DATED AND POSTED on the ground this 28th day of July, 2014

LOCATOR (s) *Chris Creed*

Agent for: Bronco Creek Exploration, Inc.

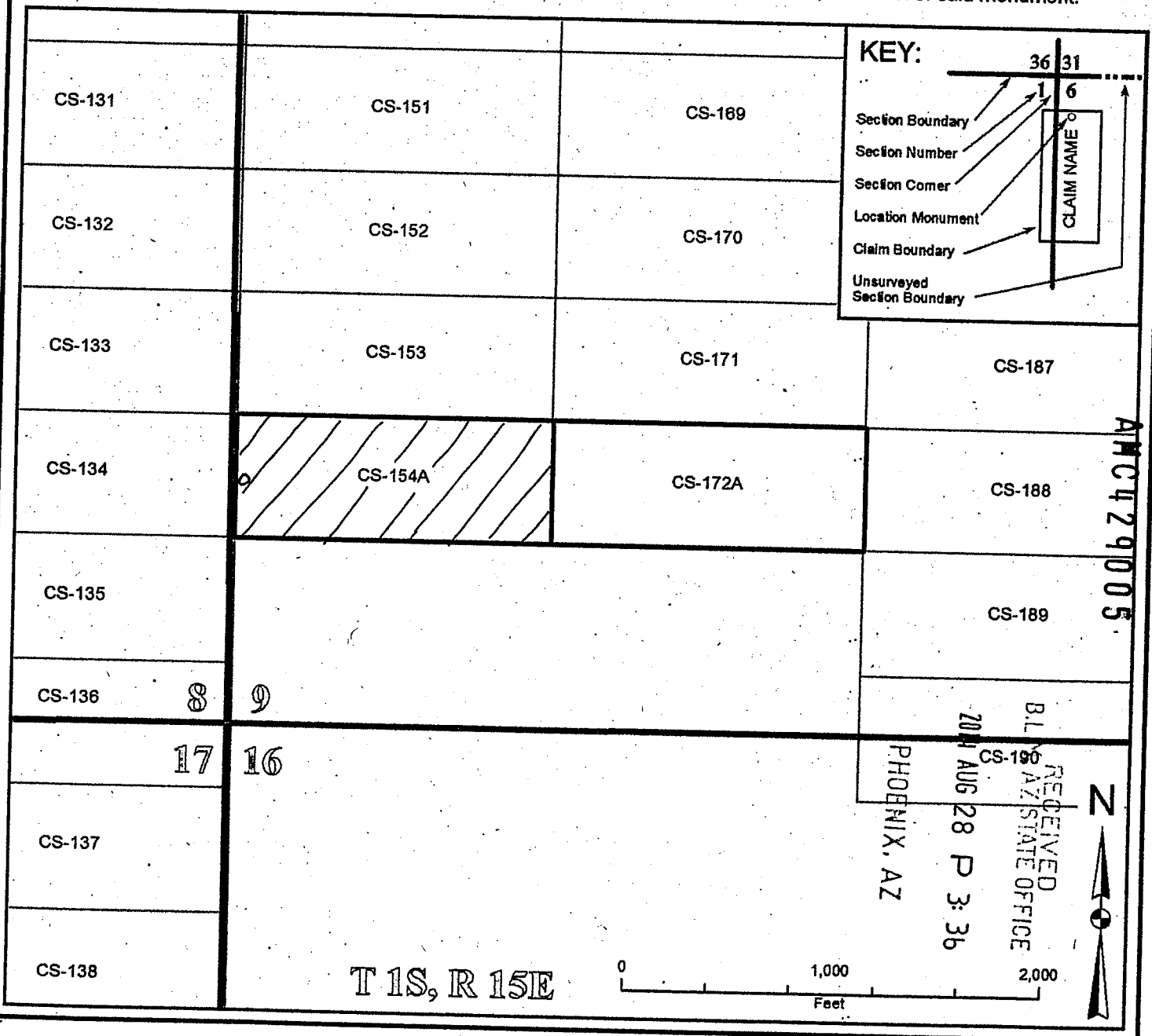
AMC429005

Lode Mining Claim Map

Map of the CS-154A Lode Claim

Map prepared from an actual field survey of said Lode Claim and attached to and hereby made a part of the Location Notice

1. Name and address of Locator of Claim: Bronco Creek Exploration Inc., 1815 E Winsett St., Tucson, AZ 85719
2. The Lode Mining Claim is located in section 9, T 1S, R 15E, Gila and Salt River Base and Meridian, Gila County, Arizona.
3. The corner, center-line, and location monuments are made up of 2" x 2" x 5' wooden posts marked with metal tags.
4. Each claim is 1500' long and 600' wide unless otherwise indicated.
5. This claim is tied to the surveyed southwest corner of the southeast 1/4 section of Section 34, T 1N, R 15E, GSRBM. The northeast corner of lode claim CS 154A lies approximately 7,867' south and 1,561' west of said monument.



AHC 429005

**LOCATION NOTICE FOR
LODE MINING CLAIM**

NOTICE IS HEREBY GIVEN that the **CS-172A**
lode mining claim has been amended by:
Bronco Creek Exploration, Inc.
1815 E. Winsett St., Tucson, Arizona 85719.

PHOENIX, AZ

2014 AUG 28 P 3:36

RECEIVED
B.L.M. AZ STATE OFFICE

The general course of this claim is **east - west** and it is situated in **Gila County, Arizona**. This claim is **1,500** feet in length and **600** feet in width. This claim runs from the location monument on which this location notice is posted approximately **5** feet in a **east** direction to the **east** end line and **1,495** feet in a **west** direction to the **west** end line. This claim is marked by six monuments, one at each corner and one at the center of each end line of the claim. This claim is defined to include all locatable minerals up to the boundaries of parcel **102-14-003**. All attempts were made to place monuments on boundary lines without entry or location on private land.

The location monument on which this notice is posted is situated within Section **9**, Township **1S**, Range **15E**, Gila Salt River Base and Meridian, Arizona and this claim encompasses portions of the following quarter section (s), section (s), Township (s) and Range (s):

SW1/4 and SE1/4 Sec. 9, T1S, R15E

Gila Salt River Base and Meridian, Arizona.

The locality of this claim with reference to some natural object or permanent monument and additional information (if any) concerning its locality are as follows: The southeast corner of the claim is:

8,467 feet south and **61** feet west of the south $\frac{1}{4}$ Section marker of Section 34 T1N, R15E.

DATED AND POSTED on the ground this 28th day of July, 2014

LOCATOR (s) [Signature] Chris Creel
Agent for: Bronco Creek Exploration, Inc

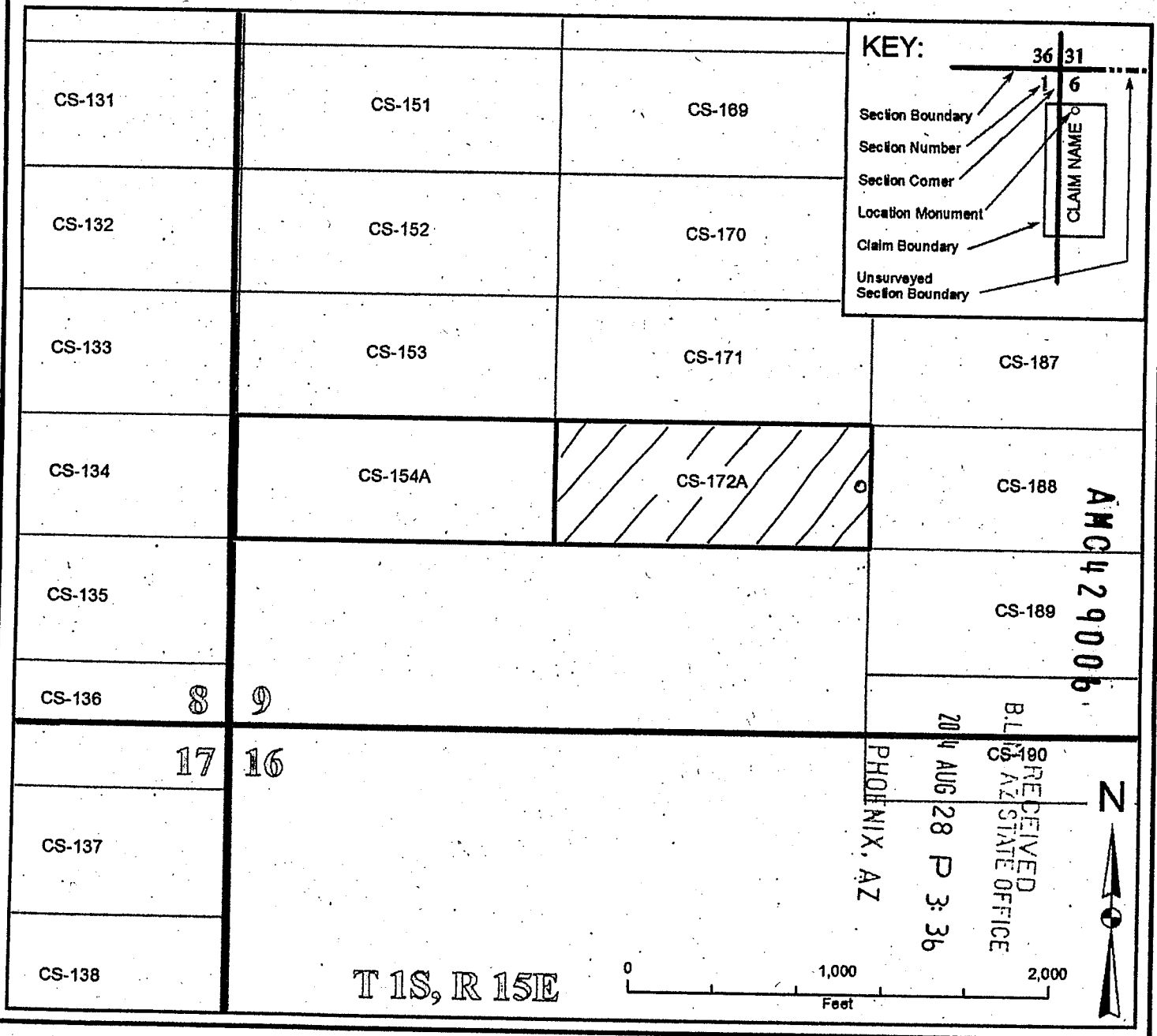
AMC429006

Lode Mining Claim Map

Map of the CS-172A Lode Claim

Map prepared from an actual field survey of said Lode Claim and attached to and hereby made a part of the Location Notice

1. Name and address of Locator of Claim: Bronco Creek Exploration Inc., 1815 E Winsett St., Tucson, AZ 85719
2. The Lode Mining Claim is located in section 9, T 1S, R 15E, Gila and Salt River Base and Meridian, Gila County, Arizona.
3. The corner, center-line, and location monuments are made up of 2" x 2" x 5' wooden posts marked with metal tags.
4. Each claim is 1500' long and 600' wide unless otherwise indicated.
5. This claim is tied to the surveyed southwest corner of the southeast 1/4 section of Section 34, T 1N, R 15E, GSRBM. The northeast corner of lode claim CS 154A lies approximately 7,867' south and 1,561' west of said monument.



DEPARTMENT OF INTERIOR
BUREAU OF LAND MANAGEMENT

Input Parameters for Geographic Report with Land

System Id = CR

Admin State = AZ

Geo State =

Casetype Begins With

Case Disp Txt = AUTHORIZED, CANCELLED, EXPIRED, PENDING, REJECTED, RELINQUISHED, WITHDRAWN

Mer Twp Rng =

Section =

Mtrs = 14 0010S 0150E 009, 14 0010S 0150E 999

Commodity =

Commodity Txt =

Pending Org =

Pend Org Decode =

Total Rows Returned: 0